



Monoblocco Bertolaso Sincronia 16-16/1-840



Machine type:	Filling Monoblock
Ref:	M309
Model:	Sincronia 16-16-1-840
Year:	2000
Condition:	Ready for operation
Formats:	0.375 L, 0.75 L
Containers:	Glass
Products:	Water (Still)

Contact:

Italiano, Русский, Українська	عربية , English, Italiano, Français, Español
+39 344 035 4270	+39 347 394 5154
purchase1@ublsrl.com	purchase3@ublsrl.com

Technical details

Rotation:	Clockwise	Has rinser:	Yes
Has capper:	Yes		
Rinser			
No. of grippers:	16	No. of treatments:	Double
Filler			
No. of valves:	16	Fill type:	Gravity/light depression
Type of nozzle:	Fixed		
Capper			
Cap type:	Straight cork	No. of heads:	1
Electrical data			
V:	400	Hz:	50 hz
Safety features:	Yes	Manuals:	Yes
---	---		

Description

Technical Specifications & Performance Data

The Bertolaso Filling Monoblock Sincronia 16-16-1-840 is a second hand bottling monoblock designed for high-quality beverage production on glass bottles. This used bottling line component integrates rinsing, filling, and corking in a compact rotary platform engineered for reliable industrial packaging performance.



Manufactured by Bertolaso, the machine features an inert gas management concept for both bottle conditioning and closure, making it an excellent choice for premium products requiring oxygen reduction.

- **Manufacturer:** Bertolaso
- **Model:** Sincronia 16-16-1-840
- **Year:** 2000
- **Container type:** Glass bottles
- **Rinser:** 16 grippers with penetrating nozzle and double inert gas treatment
- **Filler type:** Gravity/light depression with nitrogen support
- **Corker:** Single-head straight corking with inert gas and vacuum corking
- **Formats:** Compatible with 0.375L and 0.75L bottle formats
- **Electrical:** 400 V, 50 Hz
- **CIP readiness:** Integrated CIP with stainless steel dummy bottles
- **Model code & configuration:** Sincronia 16-16-1-840

Advanced Automation & Control Systems

The monoblock includes process features aimed at consistent quality and reduced oxygen pickup. The rinser employs double inert gas treatment to pre-condition the bottles. The filler operates in light vacuum/gravity mode with nitrogen, complemented by level control at the valve. A sensor detects hanging bottles at the outfeed to protect product flow and minimize stoppages. Integrated CIP and stainless steel dummy bottles enable efficient cleaning-in-place procedures across rinsing and filling turrets, supporting hygienic operation in beverage production.

Production Line Integration Capabilities

Designed for industrial packaging environments, this monoblock can operate as a standalone unit or be integrated into a complete used bottling line. It is optimized for glass bottle handling and can interface with upstream conveyors and downstream inspection or labeling systems. Format flexibility includes 0.375L and 0.75L sizes, and quick changeover is supported by the turret design and format parts.

Machine Condition & Maintenance History

The machine is in excellent overall condition and has processed approximately 1,000,000 bottles over its lifetime. Its condition and integrated CIP system suggest careful operation and maintenance, making it suitable for facilities seeking ready-for-operation bottling equipment with proven reliability.

Operational Performance & Versatility

This monoblock is particularly suited to oxygen-sensitive products handled in glass bottles. The double inert gas rinsing, nitrogen-assisted filling under light depression, and vacuum corking with inert gas injection collectively provide robust oxygen management. The machine's engineering by Bertolaso is recognized for precision filling, gentle handling, and closure integrity with straight corks. Additional safeguards include outfeed sensors for bottle position control and level regulation at the filling valve for consistent fill heights.

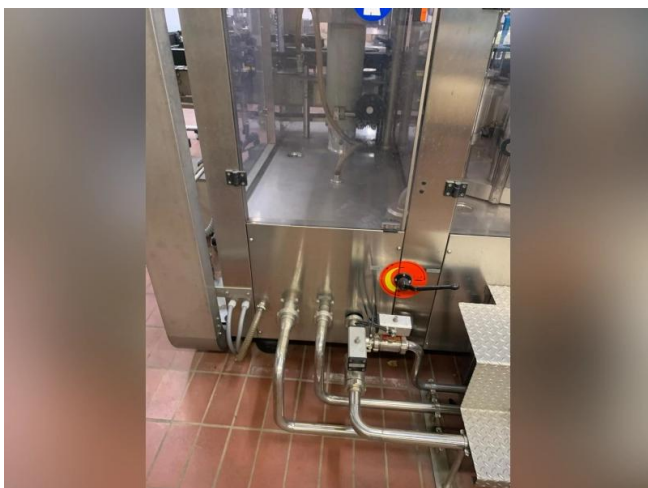
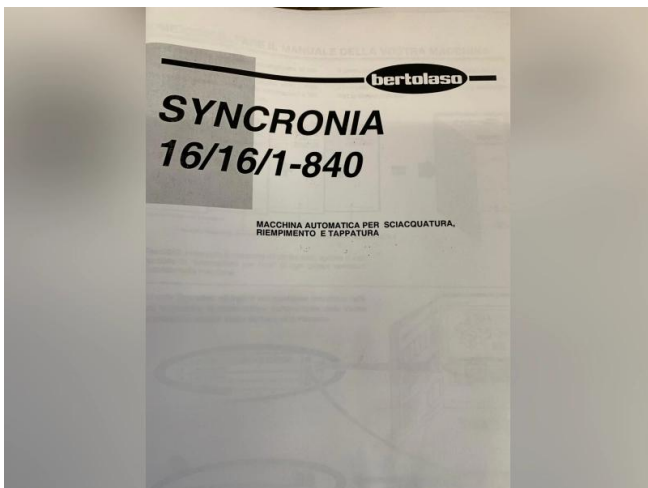
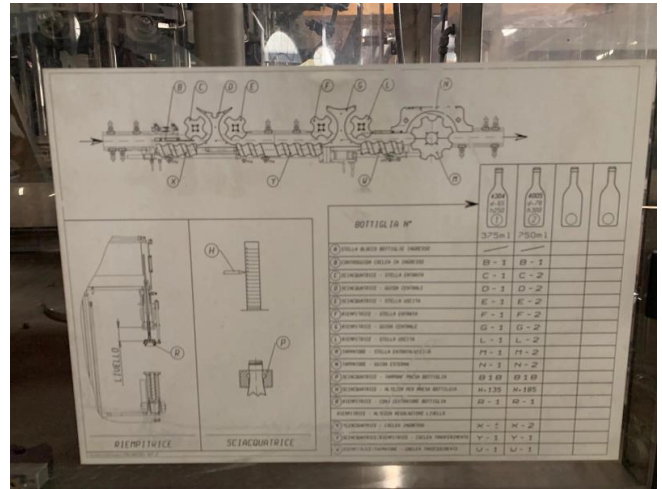
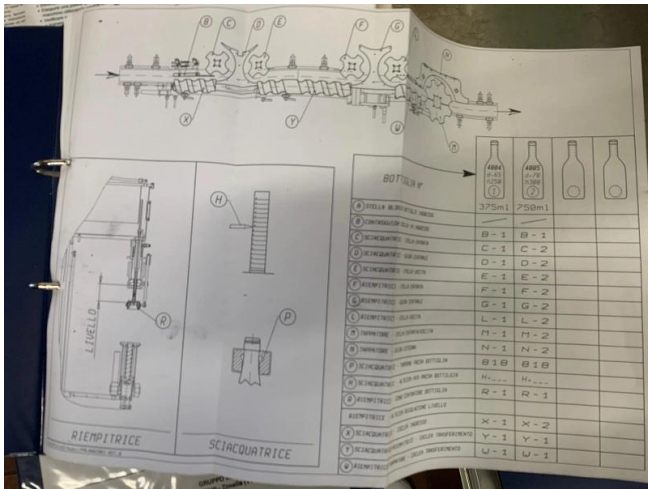


Installation Requirements & Site Preparation

Electrical power requirements are 400 V and 50 Hz. The process requires a nitrogen supply for inerting and vacuum corking operations, as well as utilities for CIP. The rotary monoblock design provides a compact footprint for integration into existing beverage production halls, with standard anchoring to a level industrial floor, and connections for conveyors and utilities.

Safety Standards & Compliance Certification

The machine includes guarding and sensor-based controls such as outfeed bottle detection to protect operators and ensure correct container handling. Hygienic design is supported by CIP capability and stainless steel dummy bottles to maintain sanitation standards typical of beverage and wine bottling environments. As a premium manufacturer, Bertolaso engineering emphasizes operator safety and product quality within established industrial packaging practices.





Used
Bottling
Lines™

Via Incisa 1, 37022
Fumane VR, Italy
info@ublsrl.com
VAT: IT02702580214

